

# 2018 Annual Report

CONNECTING THE COMMUNITY



TransAlta  
Tri Leisure Centre

# Contents

**1. VISION, MISSION AND CORE VALUES**

**2. GREETINGS FROM THE BOARD**

**3. BOARD OF DIRECTORS**

**4. MESSAGE FROM THE GM**

**5. SPONSOR PROFILE**

**6. SPECIAL PROJECT**

**7. TLC MEMBER PROFILE**

**8. TLC STAFF LOVES OUR COMMUNITY**

**9. PROGRAM STATS/WELLNESS**

**10. TLC USAGE**

**11. FINANCIAL SUMMARY**

**12. SPECIAL EVENTS SUMMARY**

**13. MARKETING AND  
COMMUNICATIONS SUMMARY**

**14. TLC STAFF PROFILE**

**15. BOARD MEMBER PROFILE**

**16. STAFF SERVICE AWARDS**

**17. CORPORATE SPONSORSHIP**

# 1.

# Welcome to the TransAlta Tri Leisure Centre

## VISION STATEMENT

The TLC is the premier recreation provider for the communities it serves.

## MISSION STATEMENT

We bring community together to inspire quality life experiences and healthy, active living.

## CORE VALUES

Our values guide our behaviors and define what we stand for: Integrity, Respect, Our People, Health and Wellness, Leadership, and Our Environment.

## 2018 | WHAT AN AMAZING YEAR FOR THE TLC!

- We're officially a Great Place to Work™
- New Myshak Community Outdoor Rink built at the TLC in partnership with the City of Spruce Grove
- Library partnership expanded
- TLC Staff Scholarship Program launched
- Enhancements to TLC security program
  - added full time security
  - cameras upgraded
  - partnership with RCMP
- Grant successes (Jumpstart and Community Initiatives Program)
- Unique programs and partnerships:
  - Stephanie Labbé Athlete Workshop
  - Rainbow Connections Program
  - Halloween Candy Exchange for passes
  - Stony Plain Outdoor Pool and Spray Park

**WE'RE  
OFFICIALLY A  
GREAT PLACE  
TO WORK™**

Great  
Place  
To  
Work.

# 2.

## Greetings from the Board



**The TLC Board of Directors establishes strategic goals & priorities to meet the needs of TLC's users.**

**T**hrough strong governance oversight, the TLC Board of Directors provides overall direction to the TLC administration team by establishing and setting strategic goals and priorities aimed at meeting the needs of the TLC's vast array of users. On an annual basis, the TLC welcomes over two million visitors, making it one of the busiest recreation centres in the region.

Being host to that many visitors brings many unique and interesting challenges, and equally unique and interesting opportunities to

provide programs and services that align with our vision of being the premier recreation provider in the Tri-Municipal Region.

2018 was another busy year of transition and change for the Board. The Board was deeply saddened at the unexpected passing of Russell Hakes, a Board member for just over one year. Russell will be missed, not only by our Board members, but by the Tri-Municipal Region as he was a very active community member. In 2018, the Board of Directors also welcomed Justin Laurie, replacing Eric Meyer from the Town of Stony Plain, who completed his term.

There was also a significant change to the TLC's administration as we said goodbye to our General Manager, Graig Walsh, after three years of leading the TLC. The Board, staff and patrons alike will miss Graig's leadership, enthusiasm, innovation and creativity. Following a lengthy search, in October the Board was excited to announce the appointment of Lenny Richer as our new General Manager. Lenny's background in municipal recreation and community and partnership development will be a welcome addition to the team.

We look forward to his leadership as we continue to develop regional partnerships and explore new ways to be involved in our communities. A special thank you to the TLC leadership team who worked very hard during the GM search to ensure the facility continued to operate on a first-class basis.

Following a comprehensive staff survey, in 2018 the TLC was formally certified as a Great Place to Work—a truly exceptional accomplishment recognizing the great work of the TLC in ensuring staff are heard and recognized for their outstanding contributions. One of the Board initiatives that came out of the feedback from the survey was the creation of a scholarship program that any member of our staff can apply for. In 2018, we were very pleased to have awarded a total of \$5,000 to support five staff with their educational endeavors and look forward to more in the years to come.

The TLC, with support from the three municipalities, continues to invest in infrastructure and equipment to ensure that users' needs are met. Many projects in 2018 happened behind the scenes, but included landscaping work, as well as construction of the Myshak Community Outdoor Rink in partnership with the City of Spruce Grove. The TLC continues to be a truly inspiring display of community cooperation to address the needs of users in the Tri-Region. Also in 2018, we continued to improve our membership and registration software and continued to provide RFID wristbands for our members to shorten wait times to gain admittance to the facility user areas.

**In 2018, we were very pleased to have awarded a total of \$5,000 to support five staff with their educational endeavors and look forward to more in the years to come.**

Financially, 2018 was another good year as revenues increased by \$574,000 over 2017, while expenditures grew by only \$206,000. After recognizing other revenues, the accumulated surplus for the year increased by \$939,000 to over \$3.6 million. The TLC is well positioned entering 2019 as we continue to enhance the experiences of all of our patrons and the many user groups that utilize this treasure in the Tri-Region.

On behalf of the Board of Directors, I'd like to formally thank the TLC's staff for all that they do day in and day out to support the many needs of our guests who visit us each day. I would also like to thank all of the TLC's members, patrons, supporters, user groups, and all of our guests who continue to choose the TLC for their recreational needs.

The TLC Board is excited and looks forward to 2019!

Yvan Boutin, CPA, CA  
Board Chair

**RFID  
wristbands for  
our members  
shorten wait  
times.**



# Board of Directors

The TransAlta Tri Leisure Centre is governed by a Board of Directors comprised of two public representatives and one elected official from each municipality. Each year, our Board members work together to make sure the TLC is and continues to be a champion of community, sport and recreation in the Tri-Municipal Region. For board member contact information, please visit our website at [www.trileisure.com](http://www.trileisure.com).

The Board of Directors wishes to express condolences to the family of Russ Hakes, past TLC Board member and resident of Stony Plain. We deeply appreciate Russ' contribution to both the TLC and the Tri-Municipal Region.



**YVAN BOUTIN**

Chair  
Public Representative  
Parkland County

**BRENDA BUCHKO**

Public Representative  
Parkland County

**DARRELL HOLLANDS**

Elected Official  
Parkland County

**LONNIE STEWARDSON**

Vice-Chair  
Public Representative  
Town of Stony Plain

**RUSS HAKES**

Public Representative  
Town of Stony Plain

**ERIC MEYER**

Elected Official  
Town of Stony Plain

**GREG DEWLING**

Past Chair  
Public Representative  
City of Spruce Grove

**DANIEL BEATON**

Public Representative  
City of Spruce Grove

**DAVE OLDHAM**

Elected Official  
City of Spruce Grove

From left: Daniel Beaton, Justin Laurie, Jerry George, Lonnie Stewardson, Dave Oldham, Brenda Buchko, Yvan Boutin

# Message from the GM

I am very excited to have joined the tremendous team at the TLC in October of this year, which was another successful one in many ways.

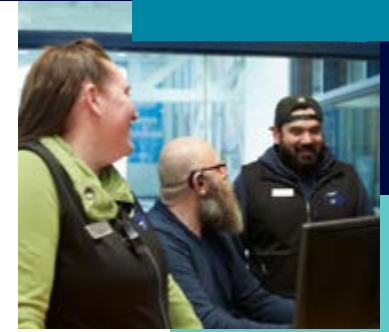
2018 saw the successful implementation of a major partnership initiative between the City of Spruce Grove and the TLC, with the opening of the Myshak Outdoor Community Rink. The City constructed the new addition of a fully boarded rink, complete with lights. Upon completion, the TLC staff took over the operations, upkeep and maintenance going forward. While the weather was

not always cooperative, we were very pleased with the first season, which saw ever-increasing use as the season went on. This summer, the rink will continue to be a hopping place with basketball and pickleball courts available for use, in addition to various programming and events that will take place. It is bound to be a hub for outdoor activity!

**The TLC has the amenities and flexibility to offer nearly any type of event imaginable.**

The TLC continues to be home to a wide array of special events, regional sporting events, tournaments and tradeshow. From the Provincial Surface Mine Rescue Competition to the Sweetheart Ringette Tournament and the Junior Lifeguard Club Provincial Championships, the TLC has the amenities and flexibility to offer nearly any type of event imaginable.

We are proud to share that in 2018 our staff have confirmed that the TLC is a Great Place to Work! We continue to strive to find ways to make this facility an even more



enjoyable place to work, based on input and feedback that is received from our amazing group of staff.

2019 promises to be another exciting year at the TLC. Numerous capital upgrades are scheduled to improve the experience of our customers. We will also continue to explore new and innovative programs to keep up with the ever-changing needs of the Tri-Municipal Region.

We look forward to seeing you in 2019!

..... Lenny Richer  
General Manager

# 5.

## Sponsor Profile Myshak Group of Companies

**I**t's no stretch of the imagination to say that Spruce Grove is a 'hockey town'. That's why it makes sense for one local business to support the Tri Leisure Centre in promoting Canada's game.

The Myshak Group Outdoor Community Rink opened this past winter at the TLC and was enjoyed by people of all ages.

The Myshak Group of Companies operates many businesses that serve our region including Myshak Crane and Rigging, Myshak Sales and Rentals, Energy Crane Service and Myshak Transportation Group. The family-run company

has been successful, in part by supporting the Tri Region.

Myshak has also been a long-time supporter of the Spruce Grove Saints, are in partnership with the Edmonton Oilers, and will continue to sponsor TLC's outdoor rink for several more years!

"Our support to the community has no boundaries", says Shelby Gartner of MCR. "We have so much pride living and working in this community, it makes sense to support one of our greatest assets, the TLC".

**The TLC thanks  
Myshak for their  
continued support  
to help our region  
continue to be  
TriActive.**

*Myshak*  
GROUP

# 6.

## Special Project

### PLAY Parkland Receives Grant from Canadian Tire Jumpstart Charities



**T**he TransAlta Tri Leisure Centre, in partnership with Parkland School Division, supports local schools through the PLAY (Physical Literacy and You) Parkland program. This allows grade three to six students to explore movement opportunities in four different environments: land, air, ice and water. It is a community collaboration with classes from

the TLC children's programs, swimming and fitness instructors, but also other local activity organizations,

including Aerials Gymnastics, the Tri Area Skate club, Miss Maddi's Dance Company and Phoenix Tae Kwon Do.

The PLAY program started as a small pilot project in 2015 with only two schools and 145 students, led by Jennifer Telfer, TLC Wellness Supervisor. It has now grown to serve 10 schools and 2,000 students!

The TLC was recently approved as a Canadian Tire Jumpstart Community Partner and on behalf of Parkland School Division, provides the PLAY Parkland program at a reduced cost.

It is important to Jennifer that kids in the Tri-Region have access to low- or no-cost recreational programs.

"The goal of the program is to introduce physical literacy principles in a fun way, but also in a way that some kids may not have access to. Through games and activities we teach them how to move on the ice, in the water, on the land and in the air. For some of these students, this is the only time they get to access some of these opportunities and improve their confidence to move", says Jennifer.

**The goal of the program is to introduce physical literacy principles in a fun way...**

## PLAY HAS GROWN!

2015



2  
schools



145  
students

2018



10  
schools



2000  
students

For the 2018–2019 school year the TLC received a \$41,820 grant. It was used to offset the costs of specialty instruction, subsidize program fees, reduce transportation costs, and purchase skates and helmets to be stored at the TLC.

The majority of this grant goes into providing assistance for the 483 students who requested funding. In addition to supporting these students, Jumpstart also sent four lucky students from Blueberry School to Connor's Corner on January 12. The students and their teacher, Cheryl Dawes, got to

experience an Oilers hockey game in premium seating, and meet Connor McDavid, all courtesy of Canadian Tire.

What is next for PLAY Parkland? Jennifer is already preparing another Community Development Grant for the 2019–20 school year to help more kids play!



# 7.

## TLC Member Profile | Don Tyson

### DOUBLE LUNG TRANSPLANT AND TLC MEMBER GRATEFUL FOR EVERY BREATH

**D**on Tyson's story began one fateful day in 2010 when he became suddenly ill. He was so sick that he could barely walk from his garage to his house.

Once admitted to the hospital, he underwent a battery of tests and was put in isolation. Two viruses were attacking his lungs, and they soon became irreparably damaged. Don spent four years on oxygen until he qualified for a double lung transplant in December, 2014.

After the transplant was complete and he was released from the hospital, Don was given very strict instructions and a fitness regimen that he had to follow. In fact, exercise was so vital for his health that if he didn't stick to it, his chances of recovery from the transplant would become slim.

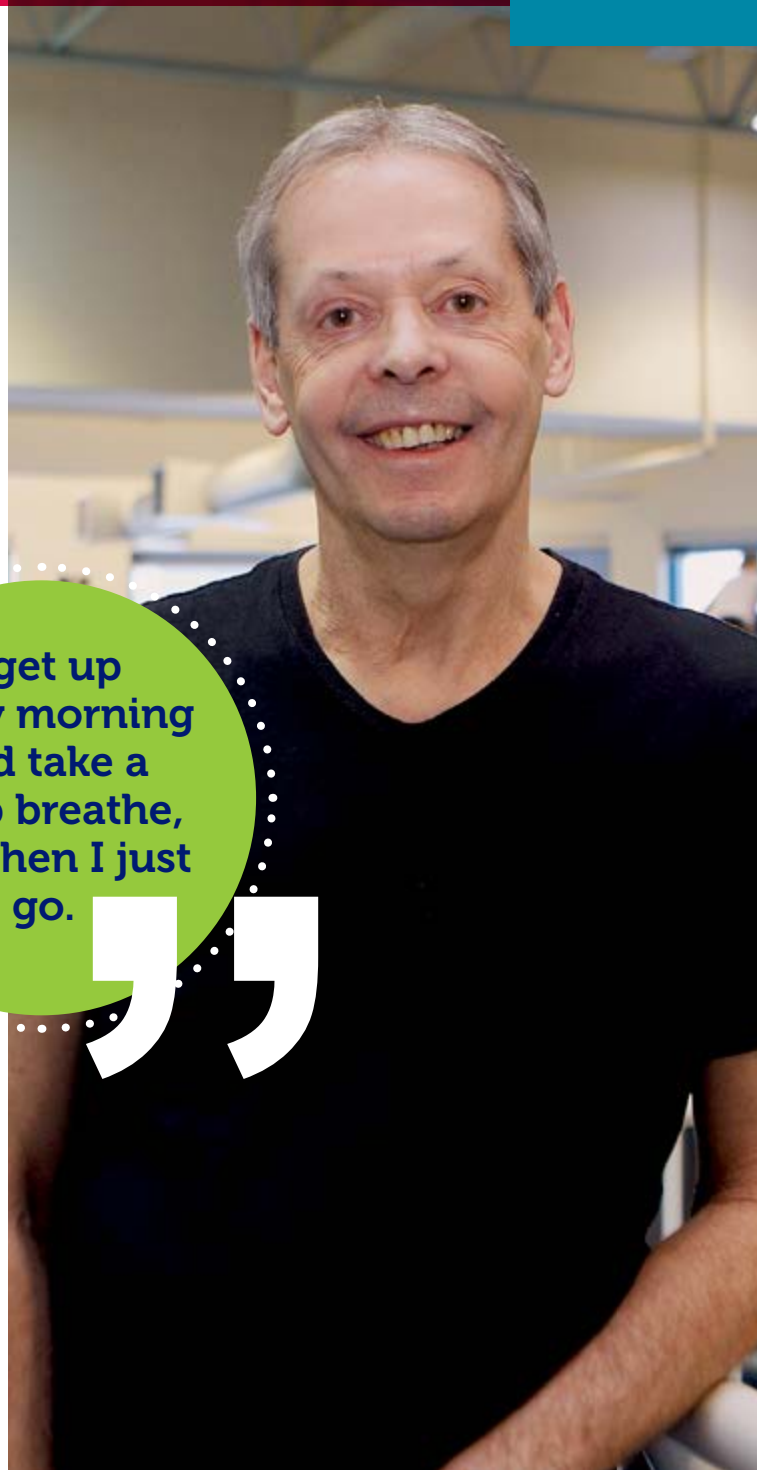
...the [TLC] people  
totally made my  
recovery possible  
and helped me get  
to where I am today.

The first thing that Don did was get a membership at

the TransAlta Tri Leisure Centre and made it an important part of his daily routine. "Everything that I needed was at the TLC. The machines and equipment are great, but most importantly, the people totally made my recovery possible and helped me get to where I am today."

Now Don continues to exercise at the TLC, and is grateful for how far he's come. "I get up every morning and take a big

I get up  
every morning  
and take a  
deep breathe,  
and then I just  
go.




deep breathe, and then I just go." He keeps busy travelling to watch NASCAR races and now volunteers for the Canadian Transplant Association.

When asked what he wants people to know about organ transplant, he says, "People need to understand that one person can save seven people's lives through organ donation." He also encourages people to talk to their family about their wishes." Even if you

have signed a donor card, doctors are going to speak to your family and ask their permission to proceed with donation as well. Make sure they know how you feel."

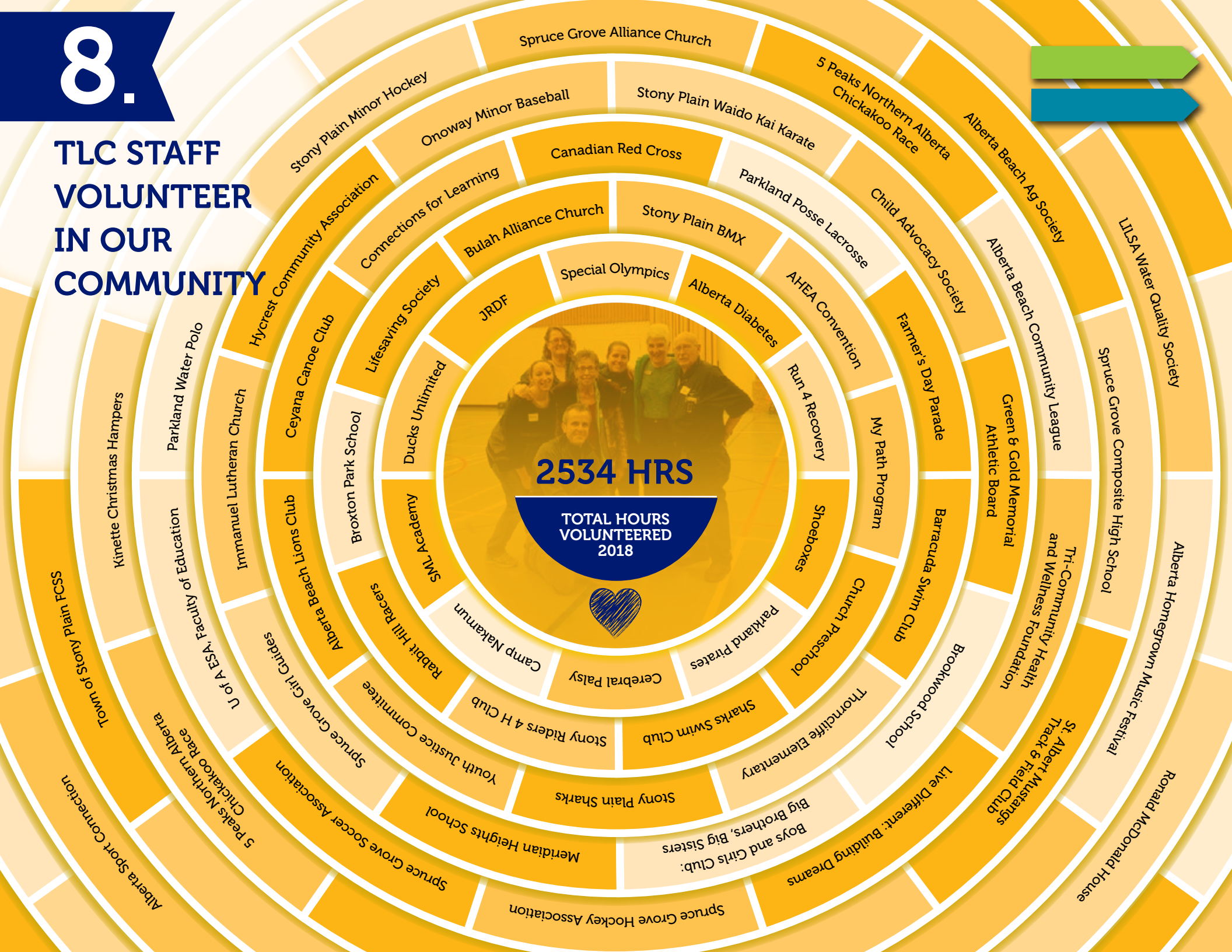
Don continues to be a shining example of what can happen when people make the decision to donate their organs. "We took my kids on a Disney Cruise last year. All the things I couldn't imagine doing I now get to do. It's totally changed my life".

For more information on organ donation, please visit  
[www.canadiantransplant.com](http://www.canadiantransplant.com)



One person  
can save seven  
people's lives  
through organ  
donation.

**TLC STAFF  
VOLUNTEER  
IN OUR  
COMMUNITY**



# 9.

## Program Stats | Wellness

### ADULT FITNESS

	TOTALS	
	2017	2018
Programs Offered	323	250
Participants	1169	1302
Drop-In Programs Offered	15	14
Drop-In Participants	8193	9135
Program Revenue*	\$115,969	\$103,583
Personal Training & Nutrition Revenue	\$77,279	\$57,282

\* Difference in revenue 2018 to 2017 is decrease in sport conditioning programming.

### HIGHLIGHTS

Regular Fitness Class  
Programming Revenue:



New Programs:

**Pound:** A fun class that incorporates weighted drumsticks.

**Minds in Motion:**

A collaboration with the Alzheimer's Society of Canada to build health and awareness for those living with dementia and their caregivers.

After School Exercise For Teachers:

We were able to provide exercise programming after school for teachers at Memorial Composite High School as part of an initiative with Dr. Doug Klein and the Change Health program.

# Program Stats | Wellness

## CHILDREN & YOUTH

	TOTALS	
	2017	2018
Programs Offered	199	175
Participants	1311	1512
Child Minding Participants	3540	4016
Program Revenue	\$213,347	\$284,766
Child Minding Revenue*	\$39,117	\$32,938

\* In February 2018 we introduced free child minding for TLC staff, which has increased usage without revenue.

### HIGHLIGHTS

#### PLAY Parkland Collaborative Program:

received a  
**\$41,820**  
community grant

PLAY Parkland collaborative program with Parkland School Division received a Community Development Grant from Canadian Tire Jumpstart to subsidize program costs, equipment and transportation for student participants.

Currently this program serves 10 schools (two from Stony Plain, two from Spruce Grove and six from Parkland County)

#### TLC Summer Camps Receive Grant Funding:

TLC Summer Camps received grant funding for two positions from Canada Summer Jobs. This funding allowed us to add a new Camp Lead position to provide more day-to-day leadership and program planning support to the summer camp staff.

#### TLC Active Kids—A Staple in the Community

The TLC Active Kids Licensed Preschool and Home School Physical Education programs continue to be a staple in the community and fill a unique need for families in the Tri-Region.

TLC Active Kids Preschool



# Program Stats | Aquatics

	TOTALS	
	2017	2018
Programs Offered	1294	1366
Participants	10,380	10,523
Drop-In Programs Offered	515	540
Drop-In Participants	14,366	16,227
Program Revenue	\$615,067	\$635,887

## HIGHLIGHTS

### Stony Plain Pool



Second year running the Stony Plain Outdoor Pool and Spray Park.

### NEW Program!

#### Future Aquatic Leaders:

TLC aquatic programmers created the program because we felt there was a need to help prepare young swimmers who want to become lifeguards and instructors.

### AquaFit Continues to Grow

We're  
Building Our  
**AQUAFIT**  
Instructor  
Base

AquaFit numbers continue to grow. We are trying to build our instructor base by training existing staff members.

# 10.

## TLC Usage

### Daily Admissions and Pass Holders

Use of the TLC increased across almost every category in 2018. The TLC was clearly the place to be!

MEMBER & PASS HOLDERS	2017	2018
Adult	2,695	2,725
Child	833	847
Youth	502	489
Senior	1,001	1,154
<b>TOTAL</b>	<b>5,031</b>	<b>5,215</b>

DAILY ADMISSIONS	2017	2018
Adult	33,297	35,689
Child	31,577	35,294
Youth	13,675	12,254
Senior	4,004	3,836
<b>TOTAL</b>	<b>82,553</b>	<b>87,073</b>



#### QUICK STATS 2017 v 2018

Member Scans

up **4%**

Members & Pass Holders

up **3%**

Daily Admissions

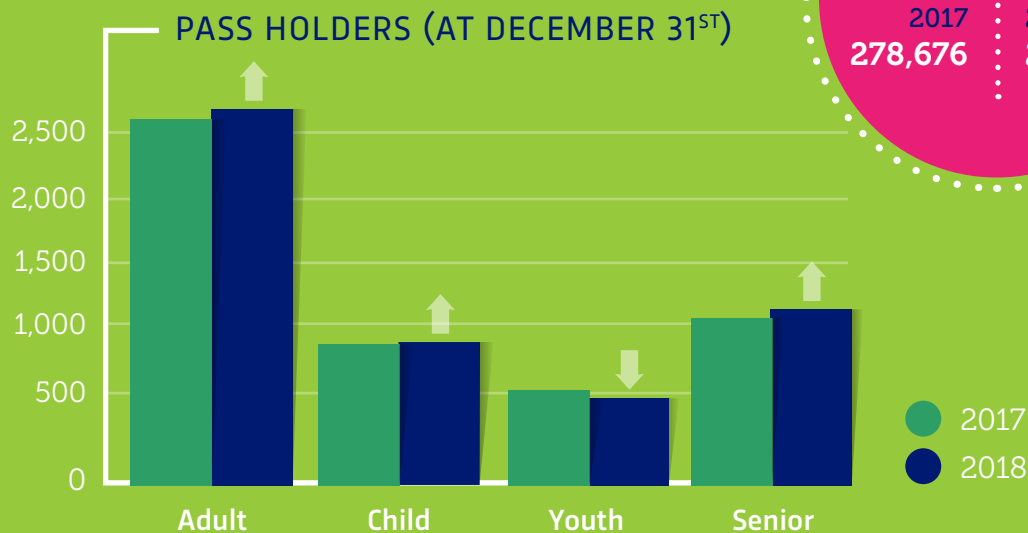
up **5%**

**TOTAL MEMBER SCANS**

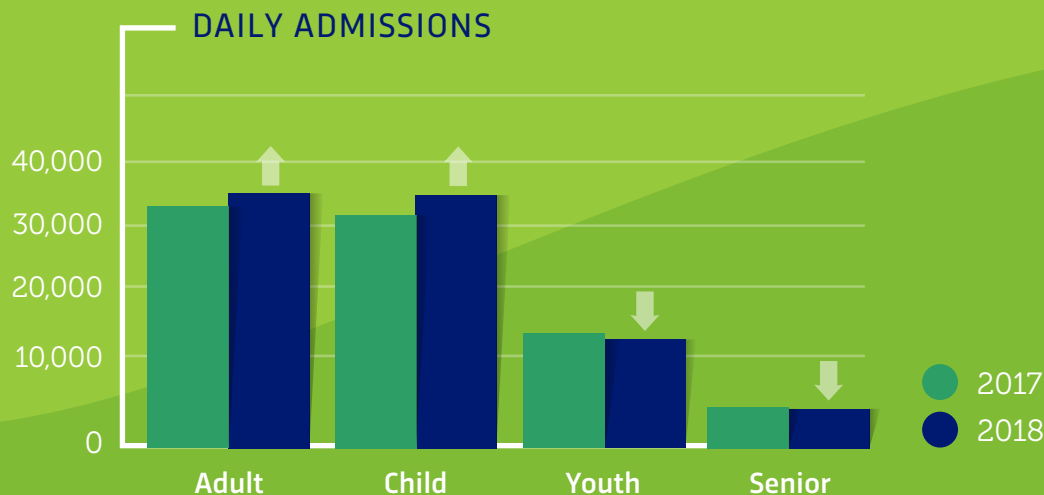
2017  
**278,676**

2018  
**291,805**

#### PASS HOLDERS (AT DECEMBER 31<sup>ST</sup>)



#### DAILY ADMISSIONS



# TLC Usage

## Facility Rentals

### QUICK STATS 2017 v 2018

Arena  
Rental Revenue  
up **3%**

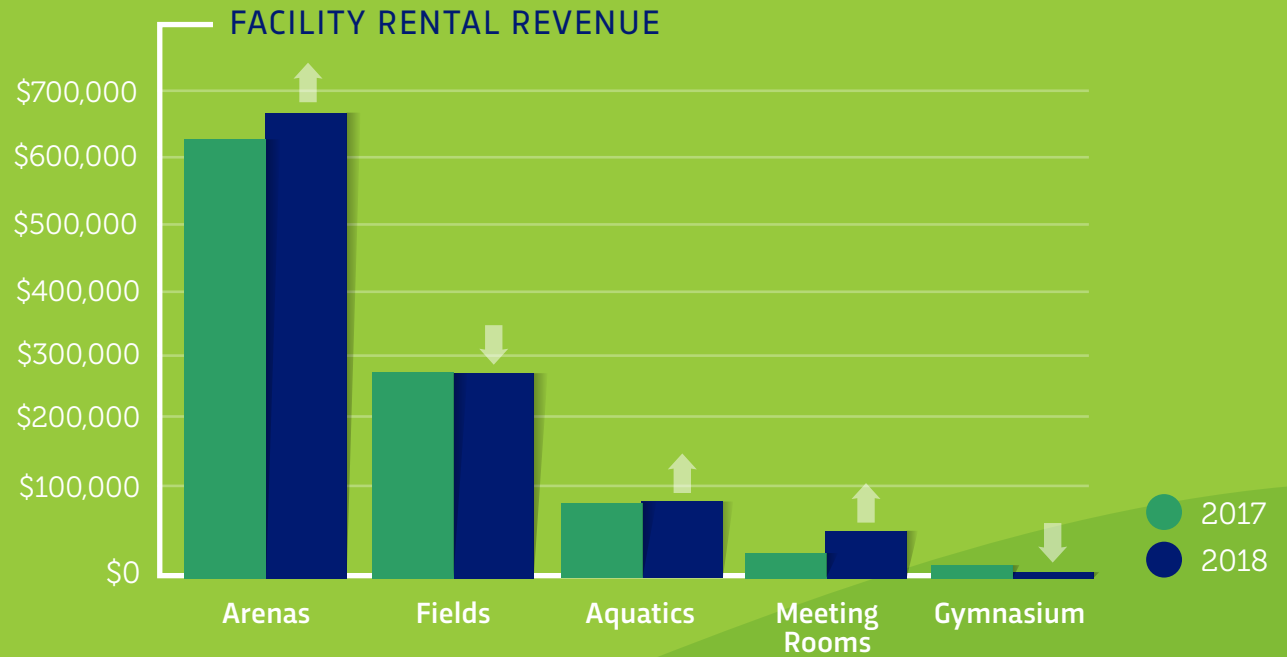
Aquatics + Field  
Revenues  
remained  
consistent

Meeting Room  
Revenue  
up **83%**



Gymnasium revenue down due to space reserved for drop-in participants rather than rentals

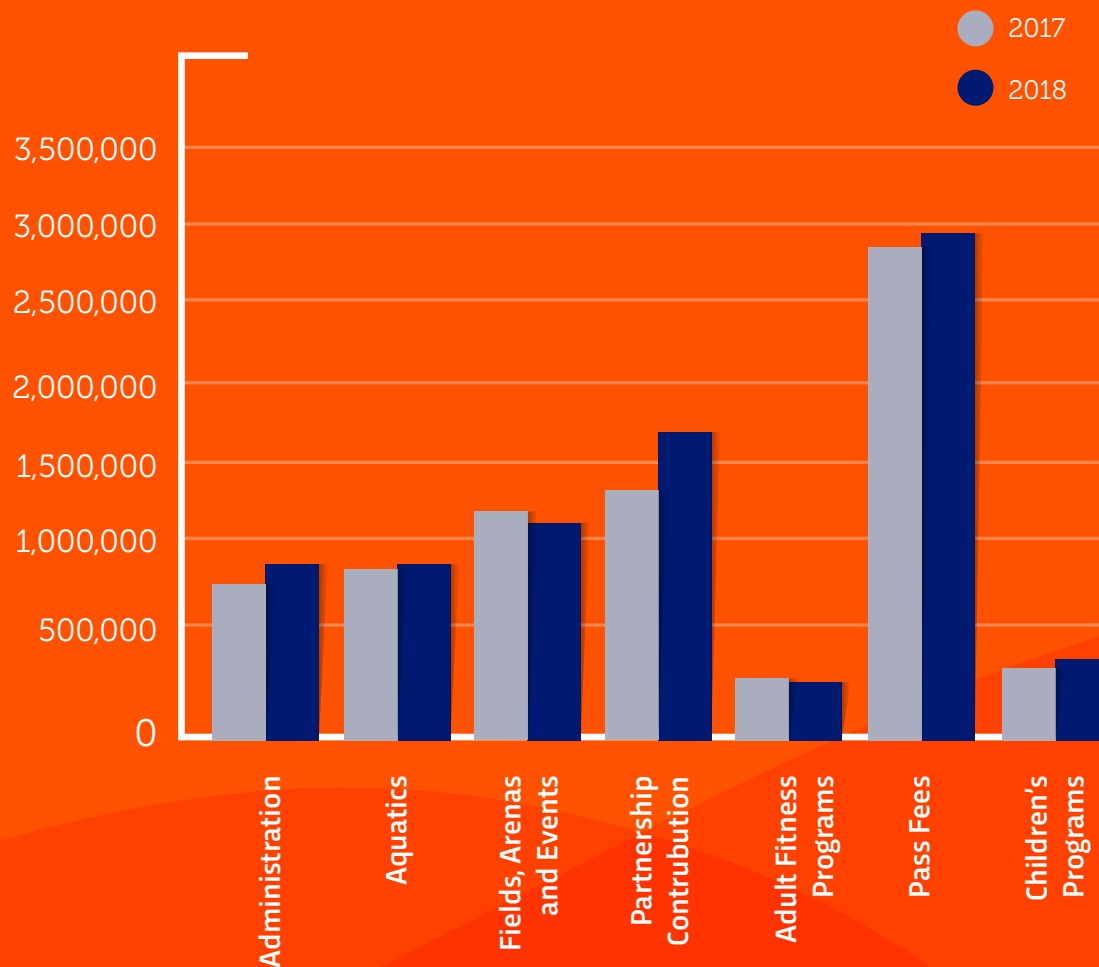
FACILITY RENTAL REVENUE	2017	2018
Arenas	\$627,640	\$648,977
Fields	\$276,670	\$258,371
Aquatics	\$74,788	\$69,807
Meeting Rooms	\$20,372	\$37,261
Gymnasium	\$8,108	\$1,821



# 11.

## Financial Summary

### Operating Revenue

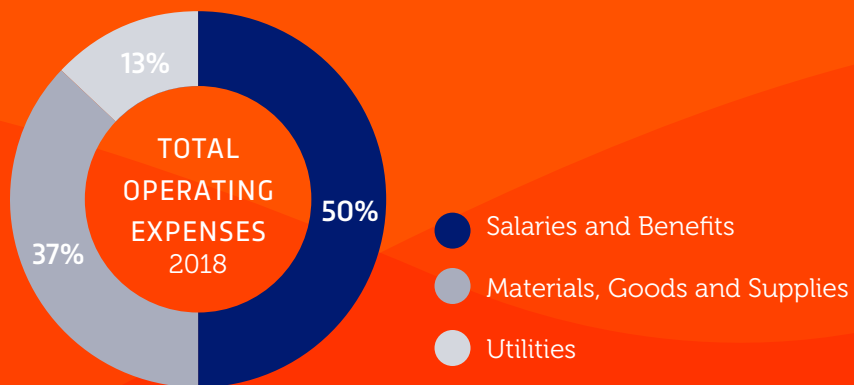
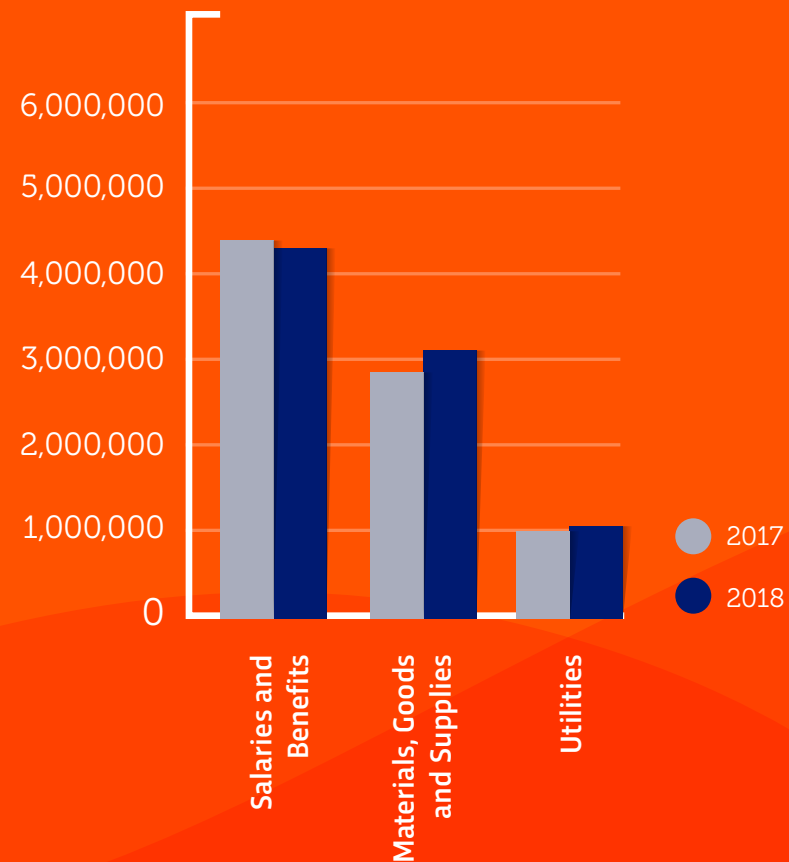


OPERATING REVENUES	2017	2018
Administration	782,702	914,500
Aquatics	869,886	909,933
Fields, Arenas and Events	1,232,714	1,157,301
Partnership Contribution	1,369,515	1,725,095
Adult Fitness Programs	193,104	160,864
Pass Fees	2,894,229	2,983,169
Children's Programs	252,464	317,699
<b>TOTAL OPERATING REVENUE</b>	<b>7,594,614</b>	<b>8,168,561</b>

# Financial Summary

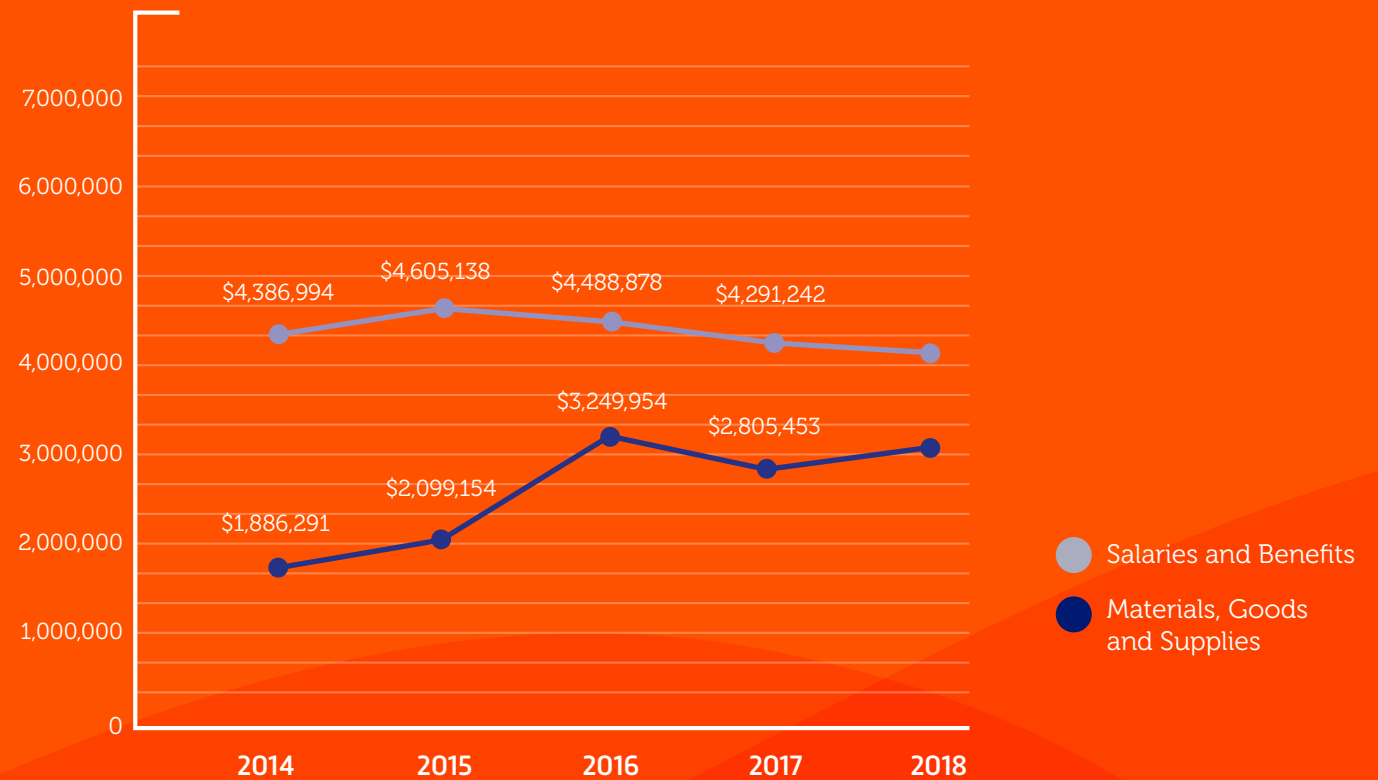
## Operating Expenses

OPERATING EXPENSES	2017	2018
Salaries and Benefits	4,291,242	4,199,457
Materials, Goods and Supplies	2,805,453	3,061,926
Utilities	1,009,639	1,051,133
<b>TOTAL OPERATING EXPENSES</b>	<b>8,106,334</b>	<b>8,312,516</b>



# Financial Summary

## Operating Expenses



# Financial Summary

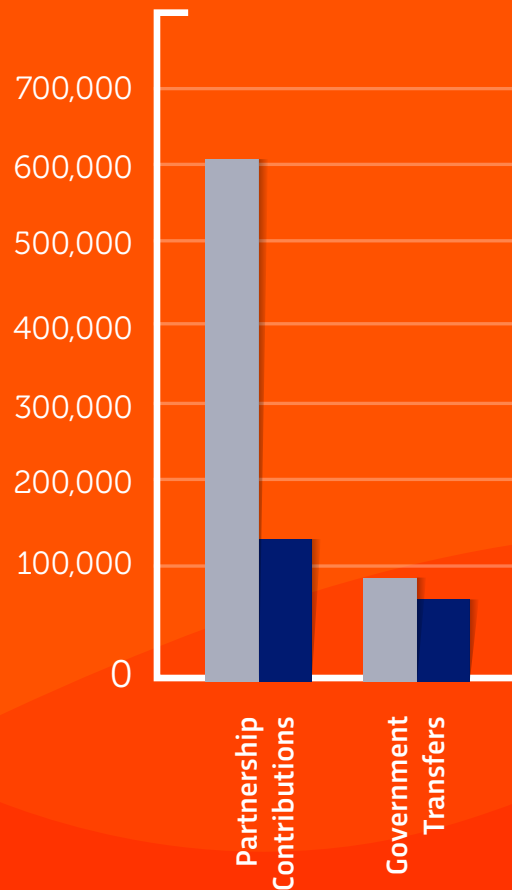
## Capital Revenue

## Capital Expenses

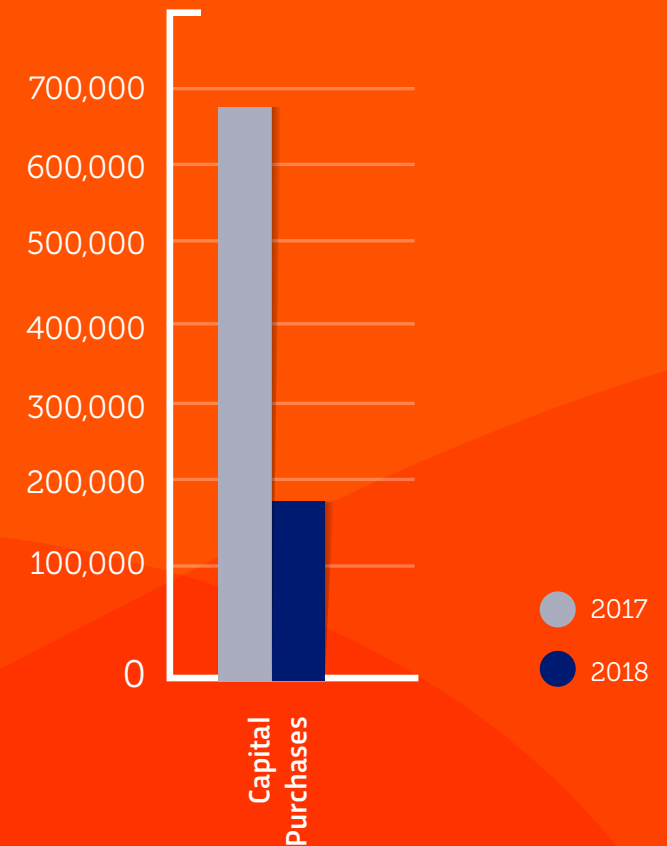
CAPITAL REVENUE	2017	2018
Partnership Contributions	616,169	126,423
Government Transfers	80,000	50,000
<b>TOTAL</b>	<b>696,169</b>	<b>176,423</b>

CAPITAL EXPENSES	2017	2018
<b>TOTAL</b>	<b>681,118</b>	<b>176,423</b>

### CAPITAL REVENUE



### CAPITAL EXPENSES



# 12.

## Special Events

### Summary

IN 2018,  
the TLC hosted  
a variety of  
community  
and sporting  
events.



#### COMMUNITY EVENTS

- Seniors' Days
- Canadian Blood Services Donor Clinics
- Parkland Home & Garden Expo
- Stony Plain Chamber of Commerce | Tri Municipal Trade Expo
- Beach Bash Pool Party
- Little Monsters' Swap Meet
- Spruce Grove Rotary Club Black & White Night
- Silver Bells Winter Market
- 37th Alberta Surface Mine Rescue Competition & Awards Banquet
- Tri-Municipal Region Fall Information Night
- Volunteer Fair (Parkland Area Volunteer Action Committee)
- Spooky Toonie Swim
- Post-Secondary Education Fair
- City of Spruce Grove Remembrance Day Service

#### SPORTS & TOURNAMENTS

- 3rd Annual Parkland School Division Try-Me-Tryathlon
- 4th Annual Spruce Grove's Strongest Competition
- Eli Wilson Hockey Goaltending Camps
- U18 Team AB Female Hockey Spring Selection Camp
- FC Memorial Cup Soccer Tournament
- Sweetheart Ringette Tournament (Spruce Grove Ringette)
- Mini Soccer Tournament (Spruce Grove Soccer Association)
- Slush Cup Soccer Tournament
- Skate Canada 2018 STARSkate & Adult Championships
- Special Olympics West Central Floor Hockey Competition
- Edmonton Masters Lacrosse Tournament
- Aerials Western Gymnastics Championships
- AB Champions Cup Hockey Tournament
- AB Handball Tournament
- Spring Classic Tournament (Parkland Posse Lacrosse)
- Barracudas Swim Meet
- Canadian Trinity Hockey Camp
- TASZ Hockey Camp
- TransAlta Resource Fair
- Ice Breaker Tournament (Spruce Grove Minor Hockey)
- Spruce Grove Composite High School International Volleyball Tournament
- U10-18 Competitive Earlybird Tournament (Spruce Grove Soccer Association)
- U10-18 Community Earlybird Tournament (Spruce Grove Soccer Association)
- 2nd Annual Polo Ice Games (Parkland Waterpolo Club)
- Glenn Hall Hockey Tournament (Stony Plain Minor Hockey)



# 13.

## Marketing & Communications

What did we do in 2018?

**TOLD  
STORIES**



**PROMOTED  
TLC**

memberships,  
passes, programs  
and events!

Got Out Into The  
**COMMUNITY  
WITH  
FREEZIES!**



**WELCOMED  
NEW SPONSORS  
& PARTNERS**

To The TLC Family!



**FENWYCK**



North Central

HORIZON  
ORTHODONTICS



ELI WILSON  
COACHING



*Myshak*  
GROUP



**ATHLETE  
DEVELOPMENT  
WORKSHOP**

with Stephanie Labbé

Mindset of a Pro:

Mastering Your Mental  
Game to Unlock  
Your Potential



**DONATED**

TLC memberships,  
passes, programs and  
promotional items  
to regional non-profit  
sports and  
organizations.

# 14.

## Staff Profile

### Robbin Grasley

#### TURNING A PASSION INTO A CAREER

**R**obbin Grasley is a very familiar face on the pool decks of the Tri-Municipal Region. She learned to swim at the Stony Plain Outdoor Pool, had her first lifeguard job at the TLC and now coordinates the Stony Plain Outdoor Pool, which the TLC has been operating for two years.

Now her passion for aquatics is about to become a full-time professional career as Robbin is finishing up a degree in Recreation Management from the University of Alberta.

Robbin's leadership on the pool deck has been shown in countless ways. She is known for her infectious laugh and a great sense of humour. But where she has really made a difference is her support and mentorship of younger staff.

"I think the TLC gives me a sense of family. I've had the chance to hire new lifeguards who I actually taught to swim as children. That's a really cool, full-circle moment".

When asked about what she likes most about the TLC, Robbin says "The TLC is like my family. I basically grew up here and it's continued

into my adult life. I get a sense of security from this place, I feel comfortable to learn and to continue growing."

We are confident that Robbin will continue to make a big impact in and out of the pool as she starts her full-time career in recreation management.

**The TLC is like my family. I basically grew up here and it's continued into my adult life.**

”



# Board Member Profile

## Greg Dewling

**T**he TLC Board of Directors is the governing body that sets the direction for the TLC's future. All of our board members bring something important to the table from their personal and professional lives. Greg Dewling has been an integral part of our board for the past three years and we feel very fortunate to have his knowledge and oversight.

### HOW LONG HAVE YOU LIVED IN THE REGION?

9 years.

### WHAT DO YOU LIKE MOST ABOUT THE TLC?

There's so many things I like about the TLC—the facility, staff, programs—the thing I like the most is the convenience of fantastic facility right in our neighbourhood. I'm five minutes from a recreation facility that offers so much to the community.

### WHAT ARE SOME OF YOUR FAVOURITE ACTIVITIES TO DO AT THE TLC?

Weight room, basketball court, swimming and of course, the hot tub!

### HOW DID YOU DECIDE YOU WANTED TO BE ON THE TLC BOARD?

I believe in giving back to the community. I've served in different areas—coaching and other city committees—when the TLC board opportunity came up, it was a natural fit with my day job and after-hours activity. I've been a member of the TLC since the day we moved to Spruce Grove.

### WHAT DO YOU ENJOY MOST ABOUT BEING ON THE BOARD?

The people around the table are what makes the board a special group. I look forward to talking about what's next at each meeting.



**HAS YOUR PROFESSION HAD AN IMPACT ON YOUR ROLE AS A TLC BOARD MEMBER?**

I work at Capital Region Housing, a public housing agency that manages affordable housing in Edmonton. We develop, maintain and manage a large portfolio. The understanding of overseeing the TLC infrastructure has been a natural fit.

**WHAT IS YOUR FAVOURITE MEMORY OF BEING AT THE TLC?**

I'd have to say spending time coaching my boys in soccer. In particular, the first day we moved to Spruce Grove, our youngest son had a tryout for the Saints team . . . he made the team!

**WHAT DO YOU LIKE TO DO WITH YOUR TIME OFF?**

I like to stay active; I can usually be found walking, biking, golfing or hiking.

**WHAT DO YOU HOPE THE FUTURE WILL BRING FOR THE TLC?**

The TLC has demonstrated recreation leadership in the past number of years. I believe there's additional capacity in the coming years for that leadership role to grow.

**My favourite memory of being at the TLC has to be spending time coaching my boys in soccer.**

For more information on the Board of Directors visit our website at [www.trileisure.com/about/our-board/](http://www.trileisure.com/about/our-board/)



# 16.

## Staff Service Awards

**W**e are pleased to celebrate the success of our dedicated staff. Congratulations to the following TLC team members who received long-time service awards in 2018.

**5  
YEAR**

**Service  
Awards**

- Beatta Bass
- Denise Nickerson
- Kim Fisher
- Brendan Harder
- Trevor Hill
- Fiona Majeau
- Tracy Myer
- Jack Stewardson
- Josie Puhov
- Kim Walters
- Adrienne Woloszyn

**10  
YEAR**

**Service  
Awards**

- Robbin Grasley
- Christine Kay
- Natasha Groeneveld
- Heidi Paul
- Kristal Saunders
- Shantel Schmidek

**15  
YEAR**

**Service  
Awards**

- Gwen Gabel
- Angela Hintz

# Corporate Sponsorship

The TLC believes that a strong and vibrant business community fuels the growth of healthy, active communities. We are thrilled to have tremendous relationships with a variety of local businesses that truly value community health and wellness. Corporate sponsorships

are vital to allowing the TLC to engage with the broader community and to partner with like-minded organizations in the promotion of healthy, active living.

Thank you  
to our  
corporate  
sponsors for  
their  
ongoing  
support!



FENWYCK



North Central

[trileisure.com](http://trileisure.com)

[@trileisure](https://twitter.com/trileisure)

[/trileisurecentre](https://www.instagram.com/trileisurecentre)

[/trileisure](https://www.facebook.com/trileisure)

---

T 780.960.5080

[info@trileisure.com](mailto:info@trileisure.com)

221 Jennifer Heil Way,  
Spruce Grove, AB, T7X 4J5